



Images digitally enhanced and staged for illustrative purposes only

ARCHITECTURAL LIVING

Terrace Home with Room to Roam

Sun drenched west facing unit offering ample yard space and thick concrete inter-tenancy walls for superior acoustics.



Freehold Strata Title



3 Bedrooms



Furniture Package



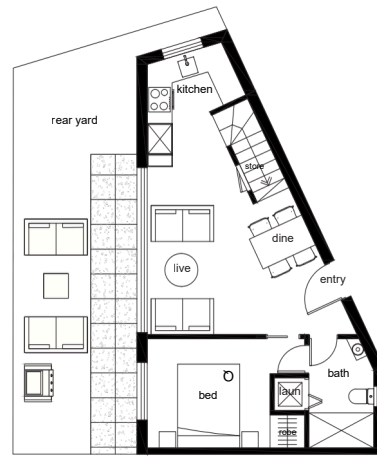
Private Car park



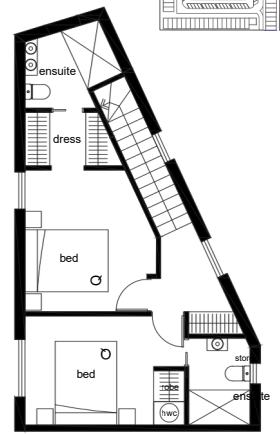
Large Court yard



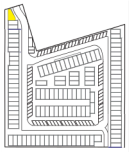
Heatpump



Lower floor



Upper floor



\$1,085,000

90 SQ.M INTERNAL | 37 SQ.M EXTERNAL

