

Images digitally enhanced and staged for illustrative purposes only



ARCHITECTURAL LIVING

The Garden Terrace Home

72 SQ.M INTERNAL | 78 SQ.M EXTERNAL

Sun drenched west facing unit offering large yard space and thick concrete inter-tenancy walls for superior acoustics.



Freehold Strata Title



2 Bedrooms



Furniture Package



Private Car park

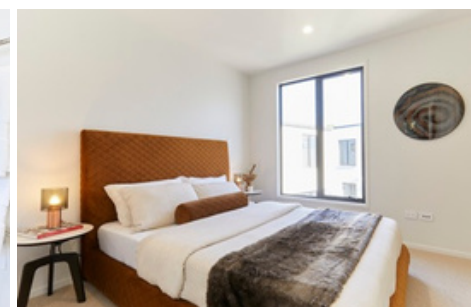
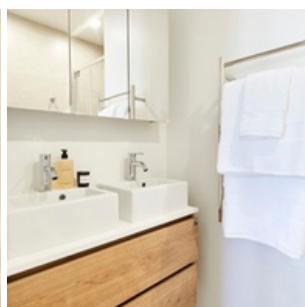


Large Garden



Heatpump

\$ 985,000



DISCLAIMER: Every Precaution has been taken to establish the accuracy of the material herein at the time of printing; however, no responsibility will be taken for any errors/omissions. Staged photos are taken of similar units. Prospective purchasers should not confine themselves solely to the content of this material and acknowledge that they have received recommendation and had reasonable opportunity to seek independent legal, financial, accounting, immigration, technical and other advice. Furniture shown are for staging purposes only and are excluded from the Purchase Price.