



Images digitally enhanced and staged for illustrative purposes only

ARCHITECTURAL LIVING

Terrace Home  
*with Room to Roam*

Sun drenched west facing unit offering ample yard space and thick concrete inter-tenancy walls for superior acoustics.



Freehold Strata Title



3 Bedrooms



Furniture Package



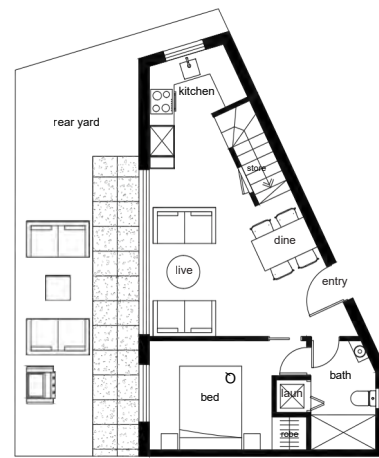
Private Car park



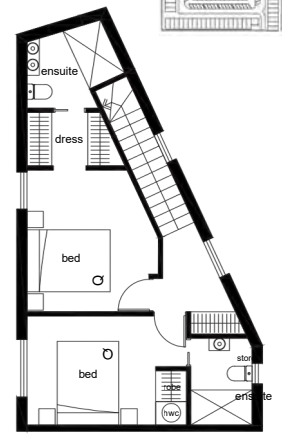
Large Court yard



Heatpump



Lower floor



Upper floor



\$ 995,000

90 SQ.M INTERNAL | 37 SQ.M EXTERNAL

